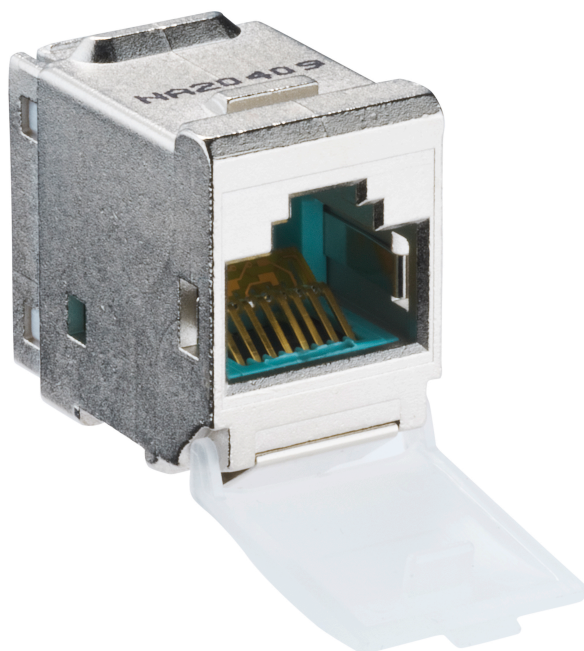


MegaLine® Connect100 jack module

VK format

MC100 RJ45 category 6A



Properties / applications

For transmitting analogue and digital voice, image and data signals. The performance features correspond to Category 6A; up to 500 MHz.

Constructive characteristics

Material (insulating parts)	Polycarbonat, aqua
Material (dust protection flap)	Polycarbonat transparent
Material	FR4 (printed circuit board)
Material contact area	Gold plating

Construction

Material (housing)	die-cast zinc, nickel-plated
Material	FR4 (printed circuit board)

Electrical characteristics

Technology	electrical
Temperature range	-40°C - +70°C
Insertion force (front) (max.)	30 N
Insertion cycles (front) (min.)	1000
Insertion cycles (module cable plug) (min.)	100

Connections

Mating face	RJ45
-------------	------

MegaLine® Connect100 jack module

VK format

MC100 RJ45 category 6_A**Electrical characteristics (LF) at 20 °C**

Contact resistance (max.)		20 mOhm
Insulation resistance between contacts (min.)	min.	500 mOhm
Dielectric strength contact-contact (min.)	min.	1000 V DC/AC
Dielectric strength contact-shielding (min.)	min.	1500 V DC/AC
Current rating (50 °C)		1.25 A

Dimensions

Width	15 mm
Height	23.5 mm
Depth	30 mm

Standards, certificates and approvals

Connector standard	IEC 60603-7-51
Cabling standard	ISO/IEC 11801, EN 50173
Power supply	IEEE 802.3bt, 4PPoE

Item description (catalogue)	Category	Part number
MC100 RJ45 category 6 _A	6 _A	LKD9A9020100000